

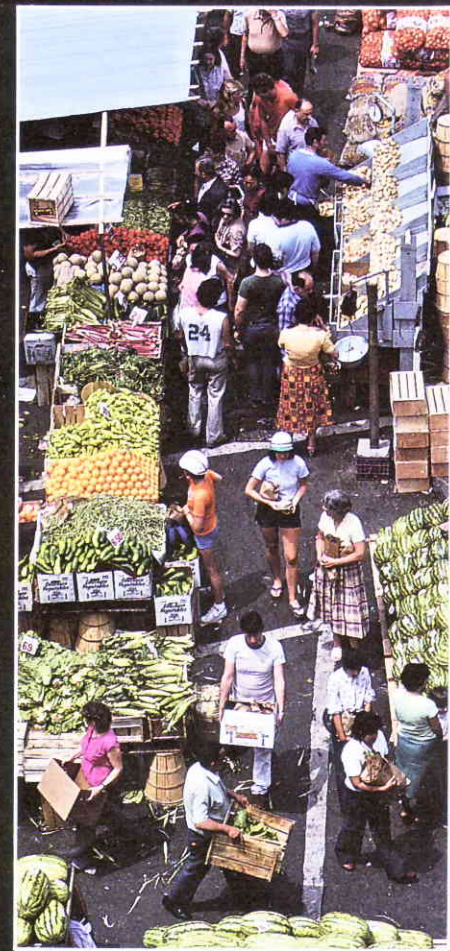
The Swintec SW20

Electronic Cash Register

For any kind of business...
any place at all.



Runs on
batteries or
standard electric
current



Outdoor Vendors on the street.



Krazy Goes

Snack Trucks on the road.



Flea Markets and Fairs under a tent.



Florists and Greenhouses in the field.

The Swintec SW20 Electronic Cash Register

Even if your retail business runs in places where electricity doesn't, then you should check out the Swintec SW20. This electronic cash register is specially designed to offer the flexibility of battery operation, so your business keeps running smoothly wherever you go.

When it comes to making the most of your retail operation, the Swintec SW20 Cash Register has everything you need *and* everything you want. In other words, it's packed with versatility and priced to fit comfortably in any business budget.

With features like these, the Swintec SW20 Cash Register proves that you *can* take it with you . . .

- AC adaptor or battery operation.
- Pre-programmed prices help save time and keystrokes by allowing quick repeat of multiple items.
- Dual departments.
- Fluorescent display.
- Management reports give you summarized breakdowns of registered sales by department, tax categories, etc.
- Lockable cash drawer.
- Running grand total.
- Operator error alert sounds an audible tone with an improper key sequence is entered.
- Preset tax key with override provides convenient programming of tax rates, tax tables, and taxable/non-taxable breakdowns. What's more, this can be manually overridden for items that are excluded or included within certain categories.
- Memory Backup System
- Swintec's famous "Magic Touch" keyboard

Additional Specifications

Display:	9 Character, Fluorescent	Power Source: AC Adaptor (included) or 4 "C" batteries
Numeric Input:	Up to 7 digits	
Ink Source:	Ink Roll	
Printer Type:	Serial	Dimensions: 5.9" (H) x 16.6" (D) x 12.7" (W)
Printer Tape:	2¼" roll	Weight: 9.5 Lbs.

Swintec[®]
CORPORATION

320 West Commercial Avenue
P.O. Box 356, Moonachie, NJ 07074